

****SPECIAL NOTICE****

TOTAL SOLAR ECLIPSE IS MONDAY, APRIL 8

OSWEGO COUNTY AIRPORT WILL BE CLOSED TO THE GENERAL PUBLIC

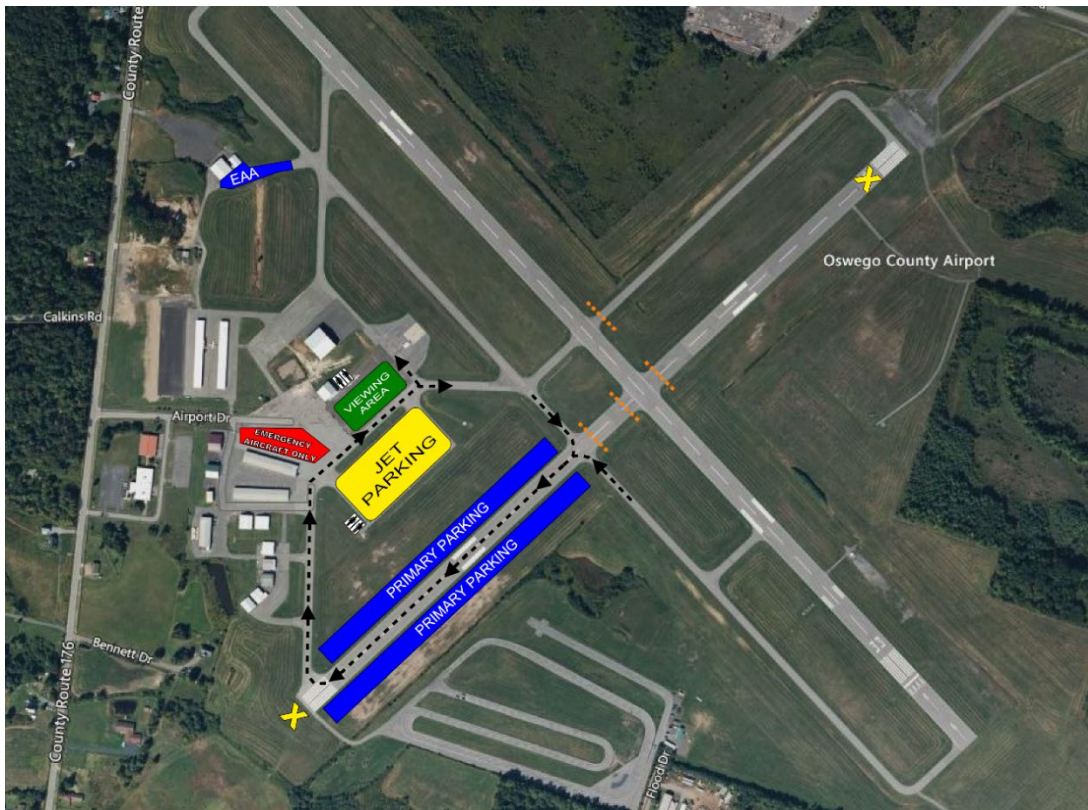
To better ensure public safety with the high volume of air traffic expected on April 8, the Oswego County Airport will be closed to the general public and NOT open for eclipse viewing.

Pilots and fly-in visitors should note:

- Runway 06-24 will be closed from 8 a.m. to 6 p.m. EST on Monday, April 8.
- Smaller aircraft should park in the turf along both sides of Runway 06.
- Larger aircraft should park in the tie-down area (Apron B).
- ****NO PARKING IS ALLOWED ALONG TAXIWAYS****

For an aerial view of runways and plane parking locations, see the airport “eclipse day” map below.

For more information, pilots and fly-in visitors can call the Oswego County Airport at 315-591-9130.



**2024 TOTAL SOLAR ECLIPSE
GENERAL INFORMATION**

The total eclipse begins after 2 p.m. EST (with totality just before 3:30 p.m.) and concludes after 4:30 p.m.

The event may bring an influx of people and traffic congestion to the county, especially in areas where views of the sky are unimpeded. There may be issues with driving conditions, weather and cellular availability, so people are advised to be prepared: gas up early, pack snacks and water, have a phone charger and dress in layers.

For more details about the eclipse, visit the Oswego County Tourism eclipse webpage at <https://visitoswegocounty.com/eclipse/>.